

APP EC100 media converter ensures conversion between UTP Ethernet and fiber optic network. Especially enables conversion between standards as follows:

10Base-T ⇔ 10Base-FL  
100Base-TX ⇔ 100Base-FX/SX

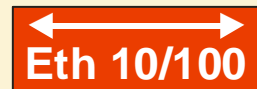
The devices can be supported with fiber optic interfaces for multi-mode or single-mode fibers (1310, 1550 nm) what allows to increase a distance of transmission.

APP EC100 acts at 10/100 autonegotiation mode on electrical and optical side, with possibility of transparent and non-transparent work mode, where FLP impulses are generated.

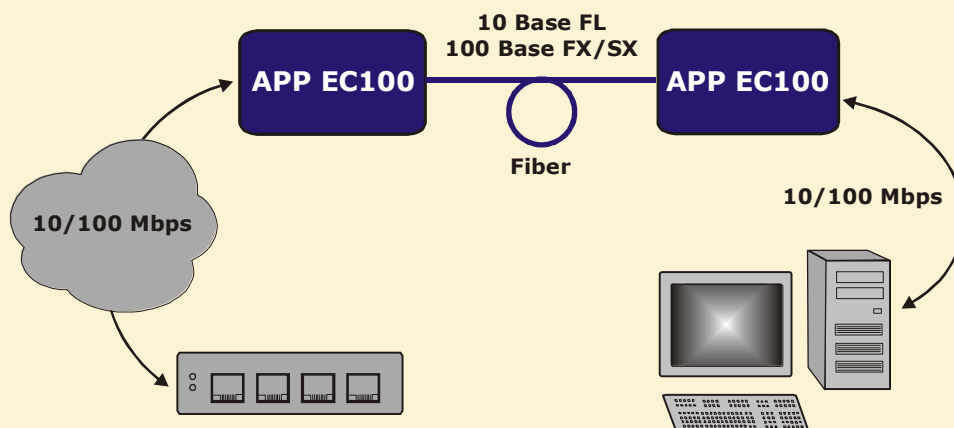
The devices are offered as a cards mounted in 19" racks or as a stand-alone devices make them possible to applicate on DIN TS-35 rail.



- **10/100 Mbps autonegotiation**
- **10Base-T ⇔ 10Base-FL**
- **100Base-TX ⇔ 100Base-FX/SX**
- **1 or 2 MM or SM fibers**
- **DIN TS-35 rail assembly**



### Application diagram:



[www.elektronikart.pl](http://www.elektronikart.pl)

### Technical parameters:

#### Electrical interface:

data format: 10 Base-T, 100 Base-TX  
input differential impedance: 100 Ω  
connector type: RJ-45  
time lag: 120 ns

#### Optical interface:

data format: 10 Base-FL, 100 Base-FX/SX  
optical medium: 50/125 μm, 62,5/125 μm, 9/125 μm  
wavelength: 1310/1550 nm  
connector type: SC

**Operating temperature range:** - 35 to + 60 °C

**Power supply:** 8 - 48 VDC

**Dimensions:** 100 x 100 x 25 mm

**Housing:** clear anodised aluminium

### Device versions:

Multi-mode system (MM)			
APP EC100	1 x D ↔	LD/PIN 1310 nm, 2 x MM	up to 4 km
APP EC100TRM*	1 x D ↔	LD/PIN 1310 nm, 2 x MM	up to 4 km
APP EC100	1 x D ↔	LD/PIN 1310/1550 nm, 1 x MM	up to 4 km
APP EC100	1 x D ↔	LD/PIN 1550/1310 nm, 1 x MM	up to 4 km
APP EC100TRM*	1 x D ↔	LD/PIN 1310/1550 nm, 1 x MM	up to 4 km
APP EC100TRM*	1 x D ↔	LD/PIN 1550/1310 nm, 1 x MM	up to 4 km
Single-mode system (SM)			
APP EC100	1 x D ↔	LD/PIN 1310 nm, 2 x SM	up to 15, 25, 40, 60 km
APP EC100TRM*	1 x D ↔	LD/PIN 1310 nm, 2 x SM	up to 15, 25, 40, 60 km
APP EC100	1 x D ↔	LD/PIN 1310/1550 nm, 1 x SM	up to 15, 25, 40, 60 km
APP EC100	1 x D ↔	LD/PIN 1550/1310 nm, 1 x SM	up to 15, 25, 40, 60 km
APP EC100TRM*	1 x D ↔	LD/PIN 1310/1550 nm, 1 x SM	up to 15, 25, 40, 60 km
APP EC100TRM*	1 x D ↔	LD/PIN 1550/1310 nm, 1 x SM	up to 15, 25, 40, 60 km

\* - module to APP DR10 rack